



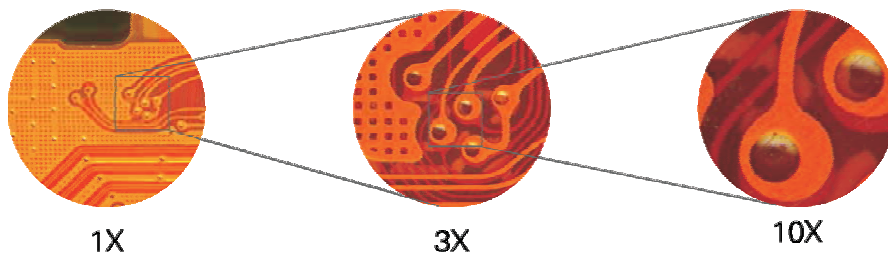
CS-S9000 Series **CatScope**



Advanced High-Quality Optical Technology...
with Basic Human Touch!!

Powerful Performance with Ergonomic Design

Integrated with knowledge, technology and creativity, the CatScope CS-S9000 is apochromatically corrected for superior optical performance and large field depth.



Large Zoom Ratio of 12.5:1 and zoom range of 0.8x to 10x





High eye-point wide field eyepiece for clear image

CS-S9000 with 10X/23mm eyepiece for wider field, is available for bright and clear image at edge. What's more, 15X and 20X eyepieces for option, meets the demand of high power. Eyepiece diopter is adjustable for different eyesights.



Tilting viewing head for comfortable operation

CS-S9000 with tilting viewing head from 5 to 45 degree, can be flexibly adjusted for different operators with different posture.



Coaxial coarse and fine focusing mechanism for fast operation

Coaxial mechanism is available for fast focusing, and lockable for longterm observation. Focusing knob with comfortable finger grip, releases the fatigue from long time operation.



High eye point wide field plan eyepiece PL10X23mm



1X & 2X main objectives



Apochromatic objective

Apochromatic design significantly improves the lens performance for color rendering. Correcting the axial chromatic aberration of red/green/blue/purple, and converge them on a focal plane, the objective is able to present the real color of the samples.



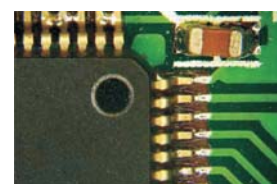
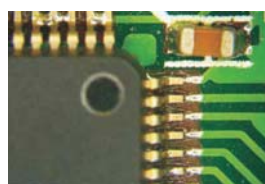
Adjustable arm stand

Except for the 50mm coarse focusing distance, the focus holder can be lifted by adjusting lock screw. It helps in observing detect large sample.



Aperture diaphragm adjustment

Shift the aperture diaphragm in front to adjust depth of field for high-quality image.



Forearm holder

Compact and streamlined holder to support forearm, reduces the fatigue of arm and shoulder from long-time operation.

Mirror adjustment

Reflected mirror in the base, is 360 degree rotatable to control the light zone. With plain side and frosted side for different imaging effect, is suitable for various applications.





LCD for displaying intensity and color temperature



Rotate for adjusting intensity

Humanized light intensity

Rotate the dimmer to adjust light intensity, the detailed percent of brightness will be displayed from the LCD on the base. It is helpful to record data of the best back light for sample observation.



Color temperature adjustment 3200K at least for warm light (yellow)



5600K at most for natural light (white)



Optional color temperature

Adjust the color temperature to create a perfect imaging background for different samples in different work environment.

LED light box



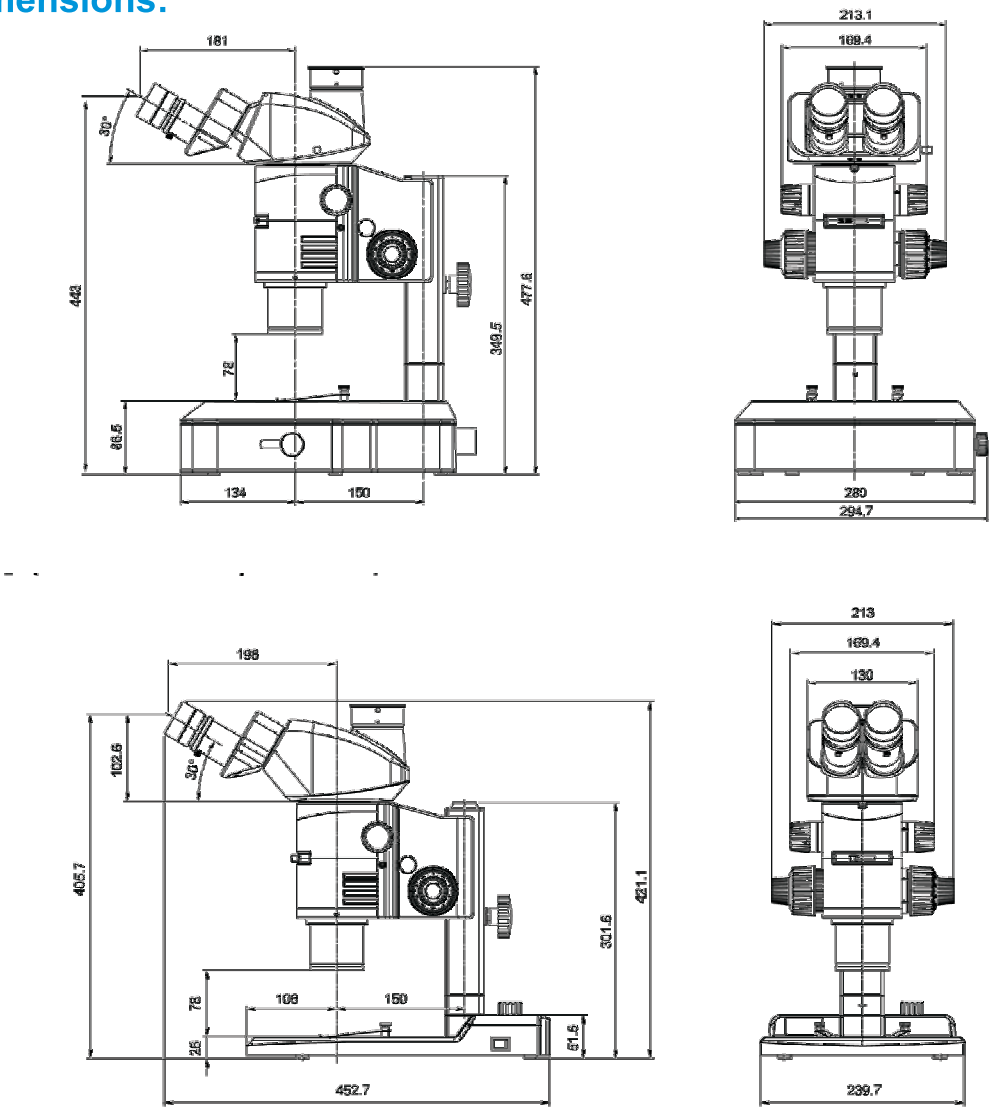
Single fiber



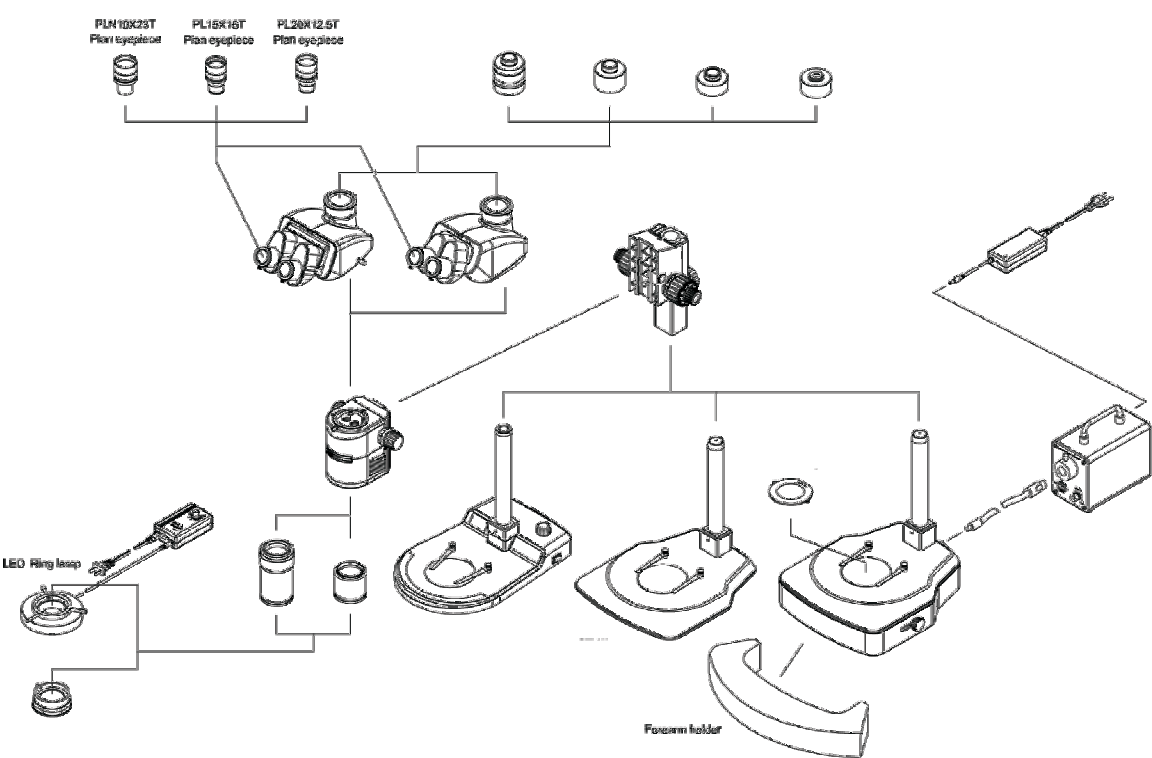
LED ring lamp (200 bulbs)



System Dimensions:



System Diagram



Technical Specifications of CS-S9000

Model	CS-S9000
Optical System	Apochromatically Corrected Parallel Optical System
Head	5- 45° Tilting Trinocular head, splitting ratio B: T = 100:0 or 0:100, Interpupillary Distance adjustment range: 50 - 76mm, Diopter Adjustment: ±5° for both the eyes
Eyepiece	High eye point wide plan field eyepiece PL10X/23mm
Objectives	Anti-fungal, Apochromatic 1X Objective
Zoom Ratio	1 : 12.5
Zoom Range	0.8x - 10x
Zoom Body	Built-in aperture diaphragm; zoom scales 0.8X, 1X, 1.5X, 2X, 2.5X, 3X, 4X, 5X, 6X, 8X, 10X, with click stop
Working Distance	78mm
Stand & Stage	Pillar & Arm Style Stage diameter: Ø 100mm; Frosted Glass & Black/White Circular Plate
Focusing	Coaxial fine and coarse focusing mechanism, integrated focus holder and stand, focusing range 50mm, fine precision 0.002mm
Transmitted Illumination	Oblique illumination module with built-in 360 degree rotatable mirror, working with external 5W LED optical fiber
Power supply	5W LED (color temperature 5000-5500K) power pack, with 500mm single optical fiber, wide voltage 100-220VAC/50-60HZ, output 12V
Warranty	Two years against any manufacturing defects. One year on electronic components.

Options in-lieu of mentioned standard specification:

- » 30° inclined Trinocular head
- » Main Objective : Apochromatic 2x with WD 20mm
- » Stage Stand : Ultra-thin base, multi-LED (5W), with digital readout of light intensity and color temperature (3200~5600K)

CS-S9000 Series can be upgraded with the following:

- » Eye-Pieces - Wide Field PL20x/12.5mm, WF15x/16mm
- » LED Ring Light for Reflected Illumination
- » Micro-Photography
- » Temperature Controlled Stage

Specifications and equipment are subject to change without any notice or obligation on the part of the manufacturer.
Copyright © CATALYST BIOTECH. PLEASE READ THE CORRESPONDING MANUALS CAREFULLY BEFORE USING YOUR EQUIPMENT.



Catalyst Biotech

C-302, Third Floor, Anupam CHS Ltd.

Plot No.: 79, Panvel - 410 206.

Maharashtra - India.

E-mail : catalyst@catalystbiotech.com

Website : www.catalystbiotech.com

Our Authorised Distributor :

