

Key Features:

- » One button control, scans, saves and (if available) opens image in Adobe Photoshop
- » Typical scan times is under a minute
- » Maximal size of scanned area: 35.9 x 21.4 mm
- » Holder accepts two 1 x 3" slides
- » 7200 dpi resolution, 3.5 microns per pixel
- » Single pass scan mode
- » 24/8 bits per color sampling rate
- » Dynamic range up to 4.2 O.D
- » Real time sharpening, automatic color correction
- » Rapid accurate fixed focus
- » USB2 interface
- » Fourth generation



The Slide Scanner includes:

- » A Scanner
- » Power supply
- » USB connecting cable
- » Installation disks
- » carrying case and
- » A unique patented histology slide holder for two (2) 1 x 3 inch histology slides.

Specifications and equipment are subject to change without any notice or obligation on the part of the manufacturer. Copyright © CATALYST BIOTECH. PLEASE READ THE CORRESPONDING MANUALS CAREFULLY BEFORE USING YOUR EQUIPMENT.



Catalyst Biotech

C-302, Third Floor, Anupam CHS Ltd.
Plot No.: 79, Old Panvel - 410 206.
Maharashtra - India.
E-mail : catalyst@catalystbiotech.com
Website : www.catalystbiotech.com

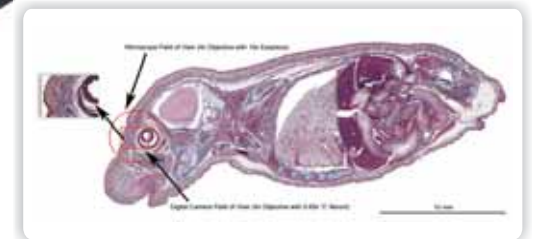
Our Authorised Distributor :



Catalyst Biotech



Slide Scanner

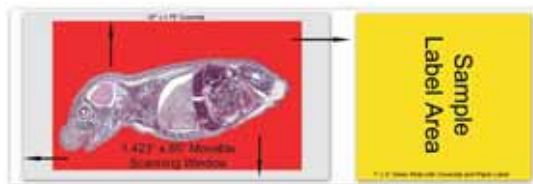


The slide scanner is a new innovative way to obtain high resolution digital images of whole histology slides!

Slide Scanner

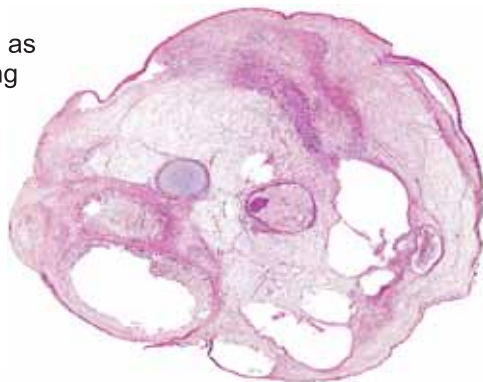
Digitizing your histology sample easier and faster

As a histology slide scanner, it allows scanning of an entire whole mounted histology sample attached to the 1 x 3 inch cover slipped glass slide. It uses a simple one button control software application that works with any Windows based computer (USB 2 connection required). It is the perfect tool for pathology or any histological imaging application.



Entire samples (maximum size = 1.423" x 0.85" or 36.13 mm x 21.59 mm) can be scanned at 7200 dpi in just over a minute! This is equivalent to a visual microscope magnification of 50x.

The Slide Scanner captures specimens as large as 36 mm in diameter. By scanning the entire sample slide in one pass, there is no uneven illumination or out of focus sample edges, as can be the case with traditional low power image capture techniques. Images up to 10,248 x 6,120 pixels, uninterpolated, can be produced which can be saved in a variety of formats including JPEG, TIFF, PICT, BMP, GIF, etc..



The unique slide holder can hold upto two histology slides of 1 x 3 inch.

This instrument will not replace a microscope and digital camera.

It is designed to compliment those instruments by doing something they cannot. Namely, capture an ENTIRE histological sample without having to stitch it together and the resulting picture will have the image quality of a 5.0x objective.

» Slide Scanner is strictly not recommended for wet mounts.

Technical Specifications:

Image Sensor	Color CCD
Light Source	Cold Cathode Fluorescent Lamp
Hardware Resolution	7200 dpi
Color depth	Color: Input 48 bit; Output 24/48 bit Grayscale: 16-bit; Output 8/16 bit Black & White: 1 bit
Scan Mode	Single Pass
Dynamic Range	upto 4.2
Infrared	Built-in
Scanning Area (W x L)	36.8 x 25.4 mm (1.45" x 1") for Negative
Preview Speed	Approx. 4.5 sec (Multi-Sampling ON)
Scan Speed	With Multi-Sampling ON: 3600 dpi Approx. 48.69 sec 7200 dpi Approx. 193.41 sec
It8 Target	Included for color accuracy
Action Button	IntelliScan, QuickScan
Power Supply	15 Vdc / 1.0 A
Interface	USB 2.0
Net Weight	1.6 Kgs (3.5 Lbs)
Slide Holding Capacity	Upto Two Slides
Dimensions (W x D x H)	120 x 272 x 119 mm (4.73" x 10.7" x 4.7")
OS	Windows 2000 / XP / Vista / 7
Hardware Requirements	PentiumR IV 2.0 GHz processor CD-ROM Driver One available USB 2.0 Port 512 MB RAM (1GB or higher recommended) 800 MB free HDD space (1 GB or larger recommended)
Warranty	One Year against any manufacturing defect